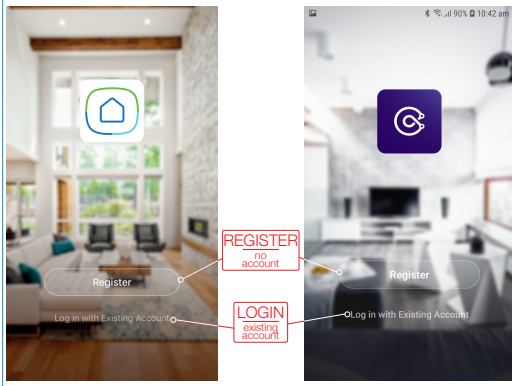
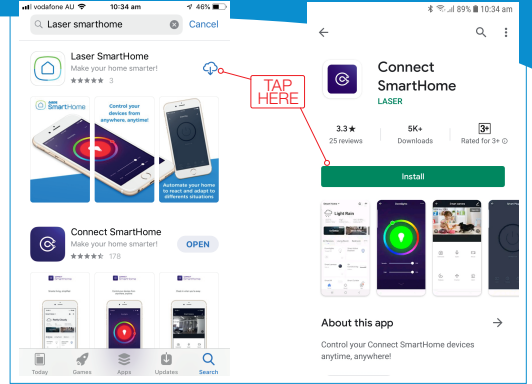


# Manual

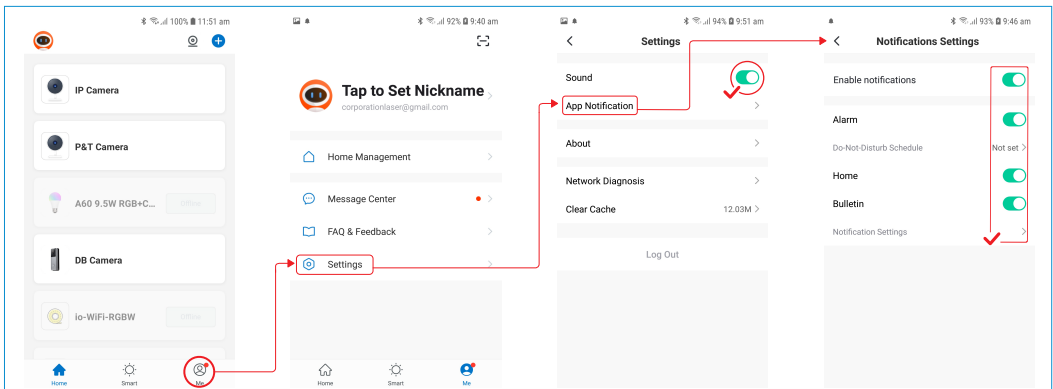
## Smart Full HD Camera

### 1 GET THE APP



### 2 REGISTER OR LOGIN TO APP

### 3 RECOMMENDED APP SETTINGS





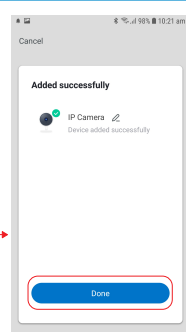
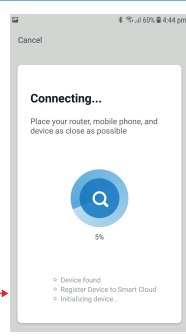
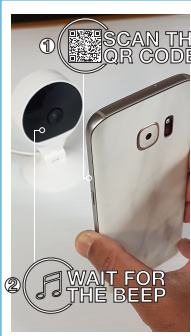
STEP ONE



STEP TWO

# 4 | POWERING CAMERA

# 5 | CONNECTING CAMERA TO APP



**TIP**

If device not found please check

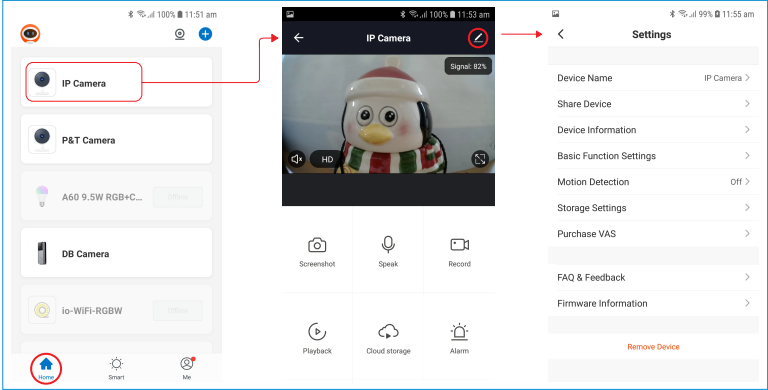
Only 2.4G Wi-Fi networks are supported



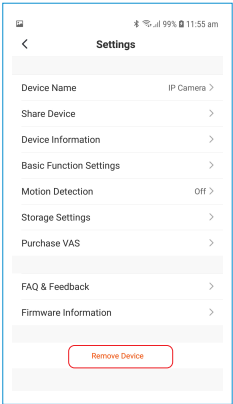
**MICRO SD CARD**  
FOR MOTION DETECTION RECORDINGS



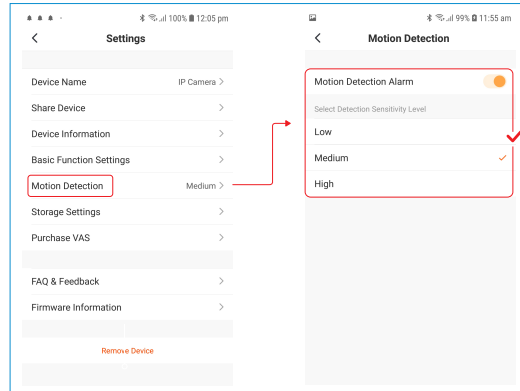
**6 CAMERA SETTINGS**



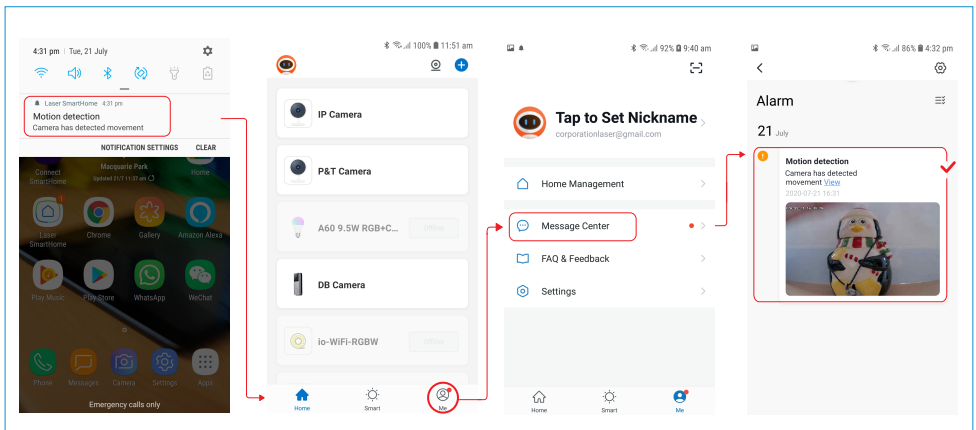
**7 REMOVING CAMERA**



## MOTION DETECTION SETTINGS

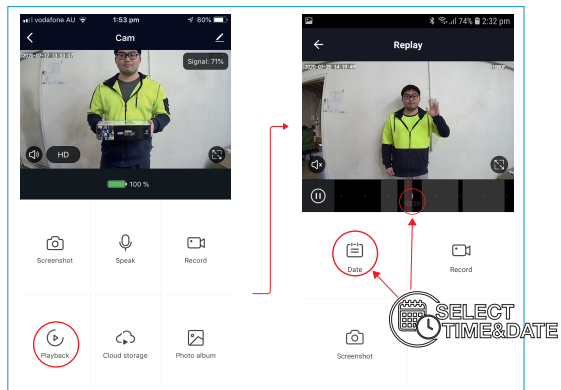


## MOVEMENT DETECTED PHOTO



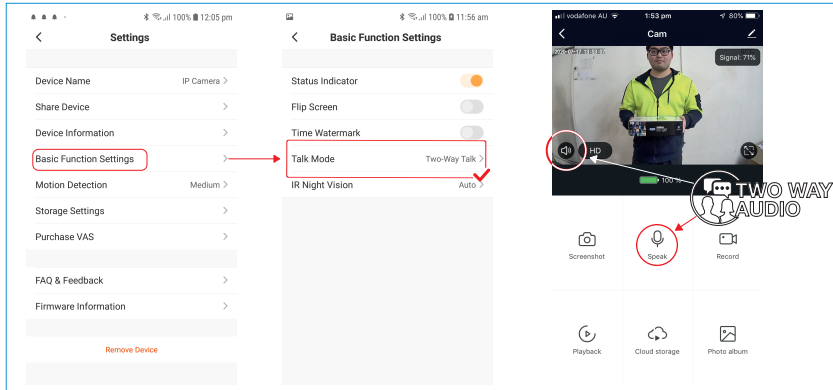
## MOVEMENT DETECTED VIDEO

**MICRO SD  
CARD REQUIRED**

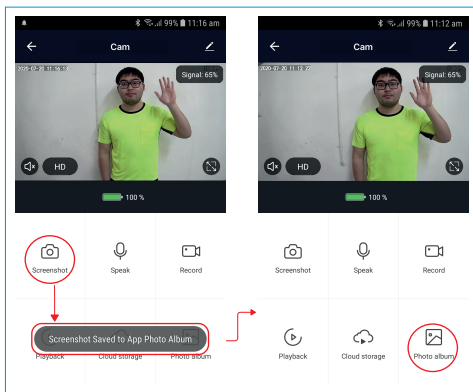


# 9 CAMERA FEATURES

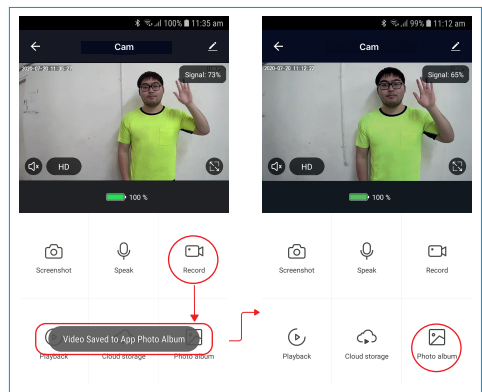
## 2 WAY AUDIO



## TAKE SCREENSHOT



## TAKE VIDEO



For more  
helpful guides  
visit us at



**LASER**

[www.youtube.com/LasercoAu](https://www.youtube.com/LasercoAu)

**CONNECT**

[www.youtube.com/channel/UCCYzBiADapJN55Zzp3yfvLQ](https://www.youtube.com/channel/UCCYzBiADapJN55Zzp3yfvLQ)

## WARRANTY

Our goods come with guarantees that cannot be excluded under the Australian Consumer Law. You are entitled to a replacement or refund for a major failure and compensation for any other reasonably foreseeable loss or damage. You are also entitled to have the goods repaired or replaced if the goods fail to be of acceptable quality and the failure does not amount to a major failure.